

SUB-DIVISIONAL DIAGRAM

KMC Geomatics - Inc Tel 013 262 4135

| | SIDES Metres | ANGLES OF DIRECTION | CO-ORDINATES Y System: WG 29° X | | S.G. No. |
|--------------------------------------|-----------------|------------------------|------------------------------------|------------|----------------------------|
| | | Constants: | | ± 0.00 | ± 0.00 |
| AB | 206.56 | 327 54 00 | A | -24 349.40 | +2 758 521.72 |
| BC | 101.73 | 61 41 30 | B | -24 459.18 | +2 758 696.69 |
| CD | 78.80 | 84 16 10 | C | -24 369.62 | +2 758 744.94 |
| DE | 33.93 | 89 18 00 | D | -24 291.21 | +2 758 752.80 |
| EF | 52.93 | 94 44 50 | E | -24 257.28 | +2 758 753.22 |
| FG | 54.74 | 104 35 40 | F | -24 204.53 | +2 758 748.84 |
| GA | 290.94 | 222 50 30 | G | -24 151.56 | +2 758 735.05 |
| | CONNECTING | DATA | | | |
| GH | 779.81 | 42 50 30 | H | -23 621.31 | +2 759 306.82 |
| BK | 159.58 | 327 54 00 | K | -24 543.98 | +2 758 831.87 |
| | | Eland 162 | △ | -25 120.63 | +2 763 466.80 |
| | | Uyskraal 166 | △ | -27 698.56 | +2 754 950.95 |
| <u>Description of Beacons</u> | | | | | Approved |
| A,H,K : Concrete Fencepost | | | | | for |
| B,C,D,E,F,G : Iron Standard in Cairn | | | | | SURVEYOR- GENERAL |
| | | | | | <u>Sheet 1 of 2 sheets</u> |
| | | | | | ACT 70/1970 |
| | | | | | CONSENT No 54539 |
| | | | | | COMPULSORY |
| | | | | | CONSOLIDATION |
| | | | | | SPLUM BY-LAW,2017 |
| | | | | | SECTION 71 |

The figure A B C D E F G A
 represents 3,6544 Hectares of land being
 PORTION 1259 (a portion of Portion 389)
 of the farm
 LOSKOP NOORD No 12 - JS

Local municipality : Ephraim Mogale
 District Municipality : Sekhukhune
Province of Limpopo

Surveyed in January 2018 & May 2019 by me


 M P A Coetsee GPr LS 0105-D
 Professional Land Surveyor

| | | |
|----------------------------|-------------------------|-----------------|
| This diagram is annexed to | The original diagram is | File : |
| No. | S.G. No. : A 4731/1953 | S.R. : |
| d.d. : | Grant : 25/1971 | Comp. : KSSW-13 |
| i.f.o. | | |
| Registrar of Deeds Limpopo | | |

SUB-DIVISIONAL DIAGRAM

KMC Geomatics - Inc Tel 013 262 4135

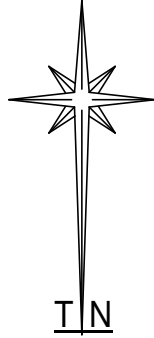
PORTION 1259 (a portion of Portion 389)
of the farm
LOS KOP NOORD No 12 - JS

S.G. No.

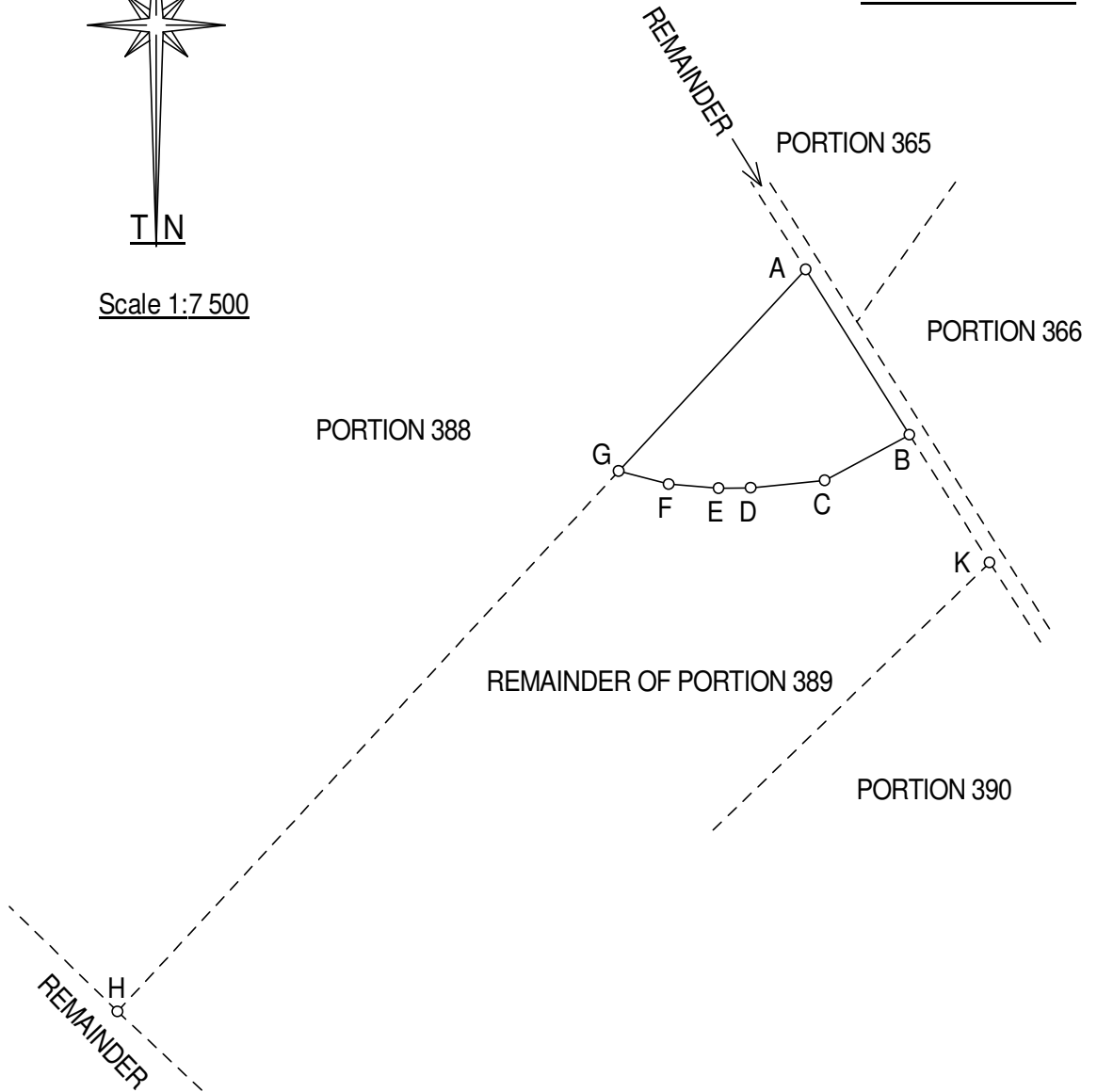
Approved

for
SURVEYOR-
GENERAL

Sheet 2 of 2 sheets



Scale 1:7 500



Local municipality : Ephraim Mogale

District Municipality : Sekhukhune

Province of Limpopo

Surveyed in January 2018 & May 2019 by me

M P A Coetsee GPr LS 0105-D
Professional Land Surveyor